

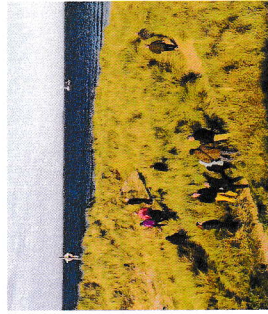
WHAT WE DO

The NJLAF advises on how to make best use of access opportunities for the widest range of people and abilities.

We have a maximum of 22 members chosen to represent access, land management and other interests, and are supported by an administrator who is based at NNPA Offices in Hexham.

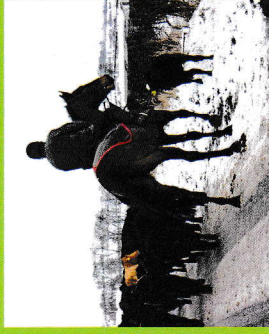
Please take a look at our website to see more information, including opportunities for you to access the countryside, as well as a member case study.

www.northumberlandnationalpark.org.uk/jlaf



WHEN WE DO IT

We meet four times a year at different locations throughout Northumberland. Meetings include site visits as well as business discussions.



WHY WE DO WHAT WE DO

- We want to share our beautiful Northumberland scenery with people from all walks of life; regardless of age, disability, gender, race, or religion.
- We are here to support people from both rural and urban communities to access the open countryside.
- We want everyone to be able to gain enjoyment from our natural landscape.
- We believe in promoting sustainable and responsible outdoor recreation to improve mental and physical health and wellbeing.
- We protect existing routes and identify historic paths that have been missed from the definitive map.
- We contribute to the countywide Rights of Way Improvement Plan.

HOW WE ADD VALUE

Take a look at some of the things we have achieved:

- Contribution to dualling of the A1 road.
- Encouraging and supporting visitors to access rural areas during the coronavirus pandemic in a responsible and sustainable way whilst protecting rural industry and way of life.
- We engage with stakeholders, to advise and make recommendations for improving access opportunities.
- Promoting opportunities of strategic county wide access improvements which in turn develop/support rural tourism and economic development. A leading example is the repurposing of disused railway tracks across Northumberland to provide sustainable access for all.

We also look to the future, monitoring key trends and growth areas, to ensure that (where we can) local access areas deliver what the public requires.

