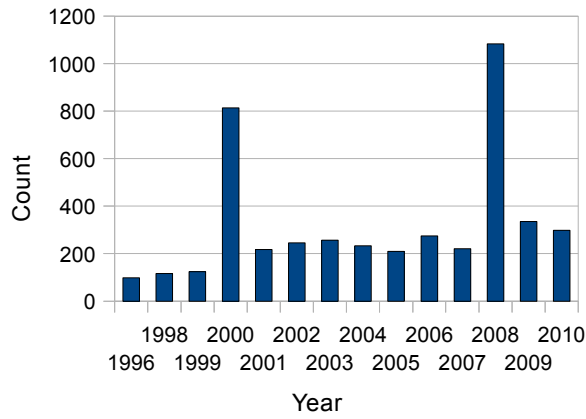


Honey-buzzard Migrant Counts

Annual UK 1996-2010

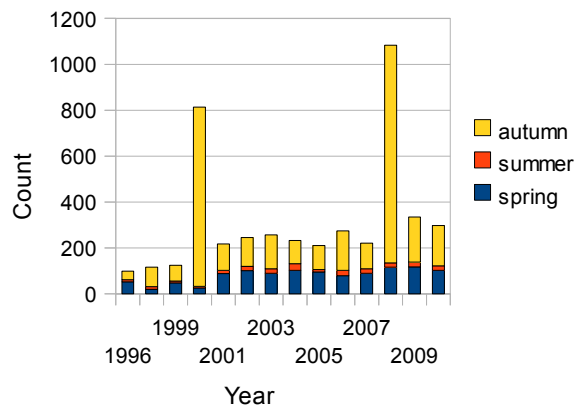
A



Honey-buzzard Migrant Counts

by Season UK 1996-2010

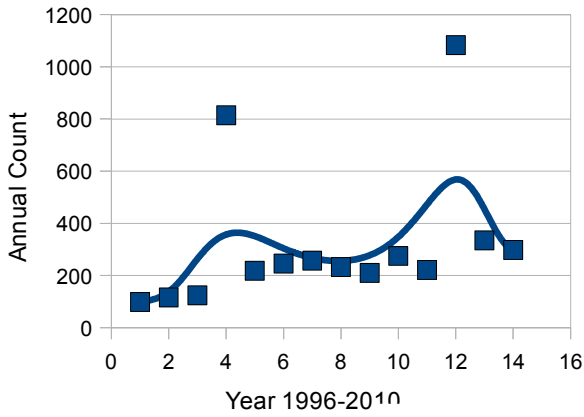
B



C

Honey-buzzard Migrant Counts UK

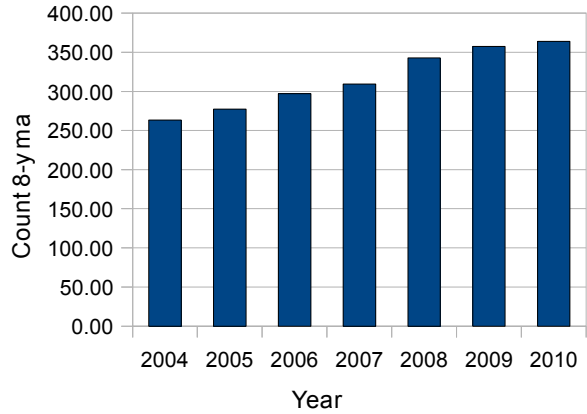
Smooth Line B-Spline=12



D

Honey-buzzard Migrant Counts UK

1996-2010 8-year Retro Moving Average



E

Honey-buzzard Migrant Counts UK

1996-2010 3-year Retro Moving Average excluding 2000,2008

